

# Concrete Cutter

- Digital Cutting gauge for easy to check cutting depth
- Large and Durable Guard hook to protect Engine
- Large Water Tank (50L) for easy to check and clean up



## Point

### Digital cutting gauge



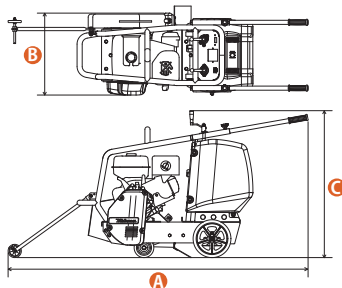
- Push "ZERO/PUSH" switch to set Zero point (0.0)



- Display example :  
15.0 → 15cm  
(Showing per 0.5cm)



## NEW MCD-318HS (190kg)



Cutting Depth  
170mm



- Cam lock to fix up-down



- Tacho Hour meter



- Easy maintenance for Battery



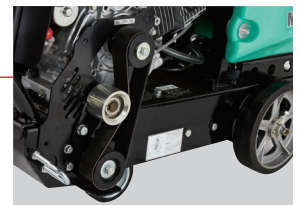
- Large Water-Tank (50L)



- Selector lever for hand-pushing and semi-auto drive



- Large and durable guard hook



- Belt tensioner



- One-touch blade cover



- Sprinkling hose block

## MCD Specifications

model	weight (kg)	dimensions (mm)	blade size mm (inch)	cutting depth (mm)	arbor size (mm)	adjusting for cutting depth	traveling system	water tank capacity (lits)	power source kW (PS)
MCD-318HS	190	H : 971 W : 542 L : 1,984	254 (10") ~ 457 (18")	70~170	27	manual lifting screw system	semi-auto drive	50	Honda GX390 gasoline (electric start) max. output 8.7 (11.8)


**MCD-218CEH (184kg)**

**MCD-L14H (100kg)**

**MCD-012H (57kg)**


● Cutting Gauge



170mm



100mm

**MCD Specifications**

model	weight (kg)	dimensions (mm)	blade size mm (inch)	cutting depth (mm)	arbor size (mm)	adjusting for cutting depth	traveling system	water tank capacity (lits)	power source kW (PS)
MCD-012H	57	H : 746 W : 435 L : 1,034	254 (10") ~ 305 (12")	70 ~ 100	27	manual lifting screw system	hand-push	14	Honda GX160 gasoline max. output 3.6 (4.9)
MCD-L14H	100	H : 930 W : 527 L : 1,650	254 (10") ~ 356 (14")	70 ~ 120				26	Honda GX200 gasoline max. output 4.3 (5.8)
MCD-218CEH	184	H : 981 W : 585 L : 1,990	254 (10") ~ 457 (18")	70 ~ 170			45	semi-auto drive	Honda GX390 gasoline (electric start) max. output 8.7 (11.8)

**WET Wet type Diamond blade**
**MW-DA**

For Asphalt

**MW-DAC**

For Asphalt and Concrete

**MW-DC**

For Concrete


**Blade MW-DA/DC/DAC:**
**For Cutting Asphalt and /or Concrete (Deluxe)**

model	blade size (inch)	thickness (mm)	arborsize (mm)
12"MW-DA/DC/DAC	12"	3.0	27
14"MW-DA/DC/DAC	14"		
16"MW-DA/DC/DAC	16"		
18"MW-DA/DC/DAC	18"		

**MW-RAC**

For Asphalt and Concrete


**Blade MW-RAC: For Cutting Asphalt and Concrete (Standard)**

model	blade size (inch)	thickness (mm)	arborsize (mm)
12"MW-RAC	12"	3.0	27
14"MW-RAC	14"		
16"MW-RAC	16"		
18"MW-RAC	18"		

**MW-HEL**

For Asphalt and Concrete

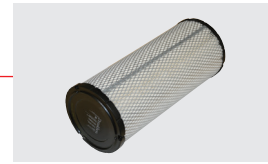

**Blade MW-HEL: For Cutting Asphalt and Concrete (Economy)**

model	blade size (inch)	thickness (mm)	arborsize (mm)
12"MW-HEL	12"	3.0	27
14"MW-HEL	14"		
16"MW-HEL	16"		
18"MW-HEL	18"		

# Dust Collecting Type Dry Cutter



● Dust Case

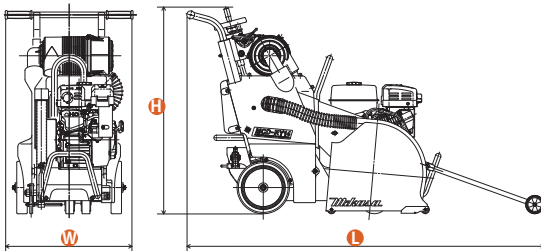


● Dry Filter

**MCD-RY14HS (145kg)**



↓  
**100mm**



## Examples of use

### [When using the asphalt blade]

- Cutting the asphalt pavement of sidewalks and ditches for facility construction
- Pipeline construction of sewer pipes
- Section cutting jobs around light poles, guardrails and manholes
- Joint cutting (3-5 cm) in green concrete (within 72 hours after casting for unreinforced concrete)

### [When using the concrete blade]

- Facility construction of concrete (unreinforced) warehouses and sidewalks

## MCD Specifications

model	weight (kg)	dimensions (mm)	blade size mm (inch)	cutting depth mm (inch)	arbor size (mm)	adjusting for cutting depth	traveling system	power source kW (PS)
MCD-RY14HS	145	H : 970 W : 610 L : 1,679	305 (12") ~ 356 (14")	50 ~ 100	27	manual lifting screw system	hand-push	Honda GX270 gasoline (electric start) max. output 6.3 (8.6)

**DRY**

## Dry type Diamond blade



**MD-DA**  
For Asphalt



**MD-DC**  
For Concrete

### Blade MD-DA/DC: For Cutting Asphalt or Concrete (Dry)

model	blade size (inch)	thickness (mm)	arbor size (mm)
12"MD-DA	12"	3.4	27
14"MD-DA	14"		
12"MD-DC	12"		
14"MD-DC	14"		